

# Ballydermot Wind Farm Proposed Grid Route

April/May 2026





# Frequently Asked Questions

## 1. Who is BnM?

BnM is a leading renewable energy provider supporting Ireland's journey to net zero by delivering secure, renewable energy at scale for businesses across the country. As part of the company's plans for the future, Bord na Móna has updated its brand to BnM, reflecting the company's future focus while also recognising its legacy.

## 2. What is the proposed Ballydermot Wind Farm?

The proposed Ballydermot Wind Farm, announced in 2020, is planned within the Ballydermot Bog Group area. Please see page 6 for further details.

## 3. What stage is the project at now?

BnM is advancing plans for the Ballydermot Wind Farm in counties Kildare and Offaly, focusing on the required grid connection to link the wind farm to Ireland's national electricity grid. Please see page 7 for further details.

## 4. How many turbines are proposed for the development and what height will they be?

The proposed Ballydermot Wind Farm layout remains as previously shared with the local community in late 2022 and comprises 47 turbines with an overall tip height of 200 and 220 metres. Further details and a draft amenity plan are available on the project website or by request.

## 5. When will a planning application be lodged?

BnM commits to keeping residents informed throughout the project's progress and will notify the community directly when a planning application for the wind farm and grid connection is submitted in the coming months.

## 6. Where will the power from the proposed wind farm go?

The electricity generated by the turbines will be transmitted directly onto Ireland's National Grid which is managed by EirGrid.



# Introduction

**BnM is a leading renewable energy provider supporting Ireland’s journey to net zero by delivering secure, renewable energy for homes and businesses across the country.**

Working with our landbank, strategic partners and local communities we are building a 5GW renewable energy pipeline, including onshore and offshore wind, solar and biomass projects – enabling industrial growth while contributing to our sustainable future.

BnM has been serving communities across Ireland for over 90 years. Today we continue to support business and local communities not only by safeguarding renewable energy supply, but also through our dedicated programme of community initiatives including community benefit funds, Mountlucas Wind Farm, Lough Boora Discovery Park, our business accelerator Accelerate Green, our Pathways to the Future educational supports and other initiatives.

For more information about BnM visit: [bnm.ie](https://bnm.ie)

# Site Location

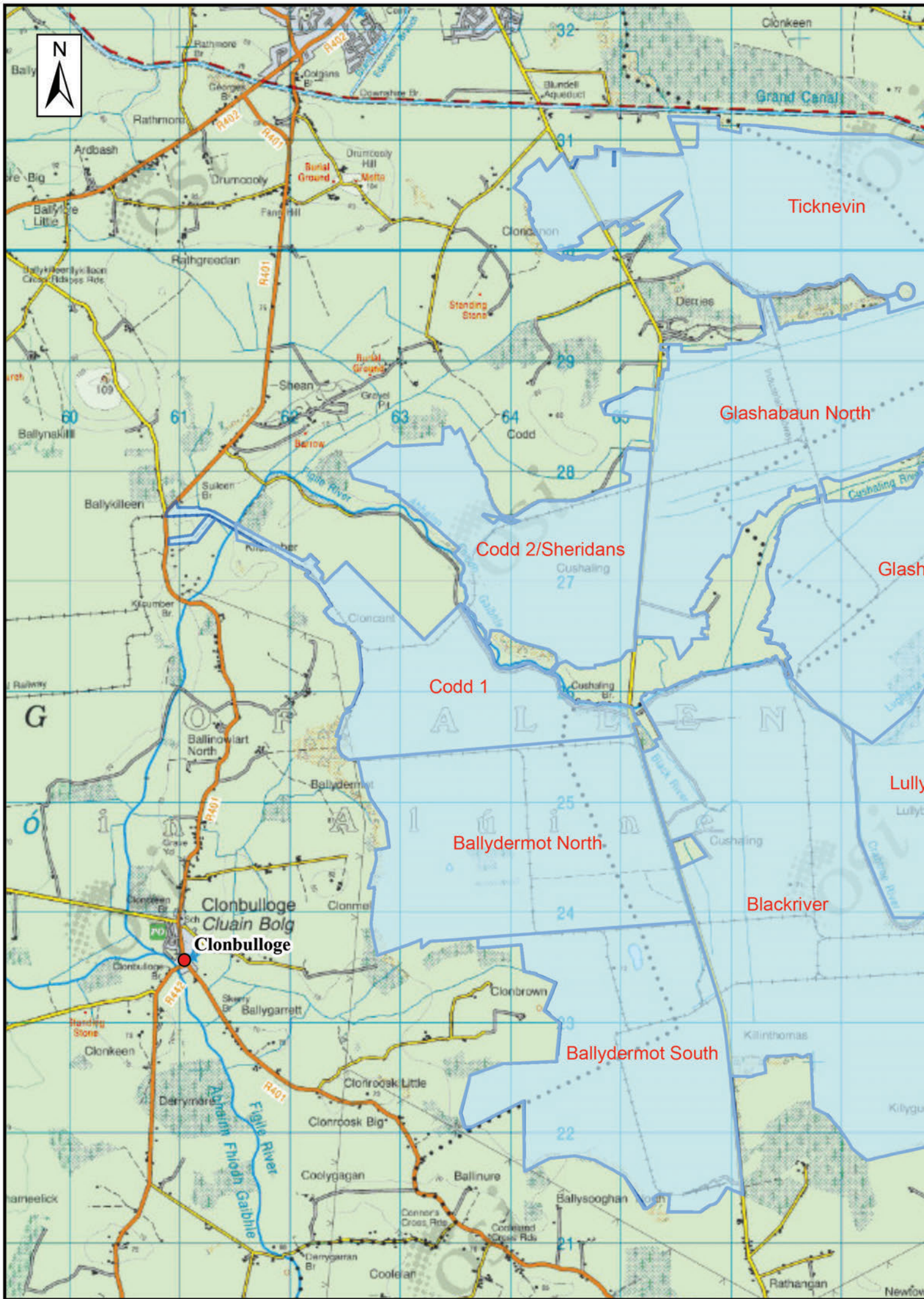
The proposed Ballydermot Wind Farm, announced in 2020, is planned within the Ballydermot Bog Group area on the Offaly and Kildare border. The proposed wind farm site benefits from good existing access, primarily via the local road network and the Grand Canal.

The M4 and M6 motorways are located approximately 25km to the north of the proposed wind farm site, with the M7 approximately 15km to the south. The proposed wind farm site is bounded by the R402 to the north, which connects to the R401 to the west and south, and by the R414 and R403 to the east. A network of regional roads links the proposed wind farm site to surrounding

settlements, while a local road runs through the site connecting the towns of Edenderry and Rathangan. The proposed wind farm site is located approximately one hour from Dublin and just over two hours from Cork and Galway.

The Grand Canal main line runs to the north of the proposed wind farm site, with the Grand Canal Barrow Line to the south, and existing walking and cycling routes along the canal routes have the potential to link with the proposed amenity facilities at Ballydermot Wind Farm.

There are several towns and villages that surround the site including Allenwood, Carbury, Clonbullogue, Derrinturn, Edenderry and Rathangan.



Ticknevin

Glashabaun North

Codd 2/Sheridans

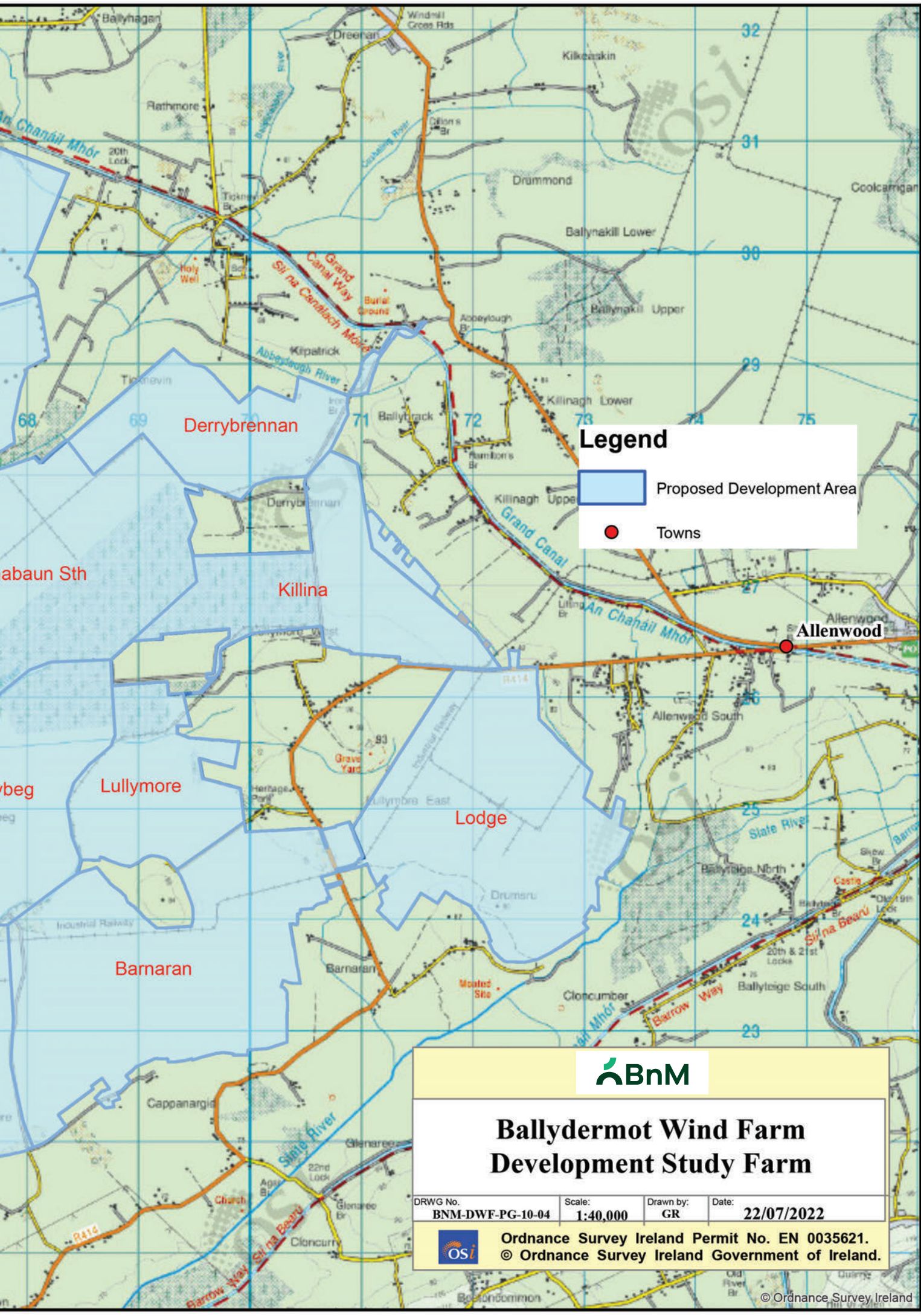
Codd 1

Ballydermot North

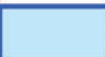

Blackriver

Ballydermot South

Clonbulloge  
Cluain Bolg  
Clonbulloge



**Legend**

-  Proposed Development Area
-  Towns



# Ballydermot Wind Farm Development Study Farm

DRWG No. **BNM-DWF-PG-10-04** Scale: **1:40,000** Drawn by: **GR** Date: **22/07/2022**

 Ordnance Survey Ireland Permit No. EN 0035621.  
© Ordnance Survey Ireland Government of Ireland.



# Overview of Proposed Ballydermot Wind Farm

The proposed development will be located within the BnM Ballydermot Bog Group which comprises of circa 5,880 hectares. This Bog Group consists of 14 bogs (please refer to map on pages 4 and 5), 12 of which have been identified as potentially suitable for the location of turbines. It is envisaged the proposed development footprint would take up approximately 5% of the total site area for turbine bases, crane hard-standings and access tracks, meaning much of the land area will not be required by the development. This provides opportunity for the remainder of the site to be utilised for other purposes, such as biodiversity and amenity.

## Number of Turbines: 47

The layout includes 47 turbines, 20 turbines will have a max. blade tip height of 200m and 27 turbines will have a max. blade tip height of 220m consistent with the design shared with the community in late 2022.

## Setback Distance: 880m

The turbine layout has been designed with a minimum setback distance of 880m to the nearest house from a turbine. This complies with the Draft Wind Energy Development Guidelines (2019), which proposes a setback distance of 4 times the tip height.

## Wind Farm Capacity: 329MW

The Proposed Project will accommodate approximately 329 Megawatts (MW) of installed generating capacity - making it the largest proposed onshore wind farm in Ireland to date. When operational, the proposed Ballydermot Wind Farm will generate a volume of electricity equivalent to the average annual electrical demand of over 200,000 Irish homes.



# Overview of Proposed Grid Route

## Proposed Grid Route

As with all wind energy developments, a grid connection is required to enable the electricity generated by the proposed Ballydermot Wind Farm to be transmitted to the national electricity grid, which is operated by EirGrid and supplies electricity across Ireland.

The proposed wind farm development includes an on-site 220kV electricity substation (*on-site substation*) within the wind farm site, along with an underground grid connection linking the site to an off-site 220kV electricity substation (*off-site substation*). The grid connection would comprise approximately 12.3 kilometres of underground cabling and would be installed mainly within the public road corridor where possible to minimise impacts on private land. Should the project be consented and progress to construction, traffic management measures will be implemented in consultation with the relevant local authorities to minimise disruption.

Based on current design work, the proposed underground 220kV electrical cabling route for the grid connection will exit the proposed on-site substation located on Lodge Bog via an internal access track onto the R414. It will continue along existing public roads, crossing beneath the Grand Canal west of Shee Bridge via Horizontal Directional Drilling. From here, it will continue along the R403, through Allenwood, and turning south along the L6002 at Prosperous to connect to the proposed off-site substation. From this point, it will provide connection to the national grid via a loop-in connection to the existing Maynooth-Dunstown 220kV overhead line. Please see pages 8 and 9 for a map of the proposed grid route.

## Traffic Management

The grid route has been designed to remain within public road corridors where possible to minimise impacts on private land. Should the project be consented and progress to construction, traffic management measures will be implemented in consultation with the relevant local authorities to minimise disruption.



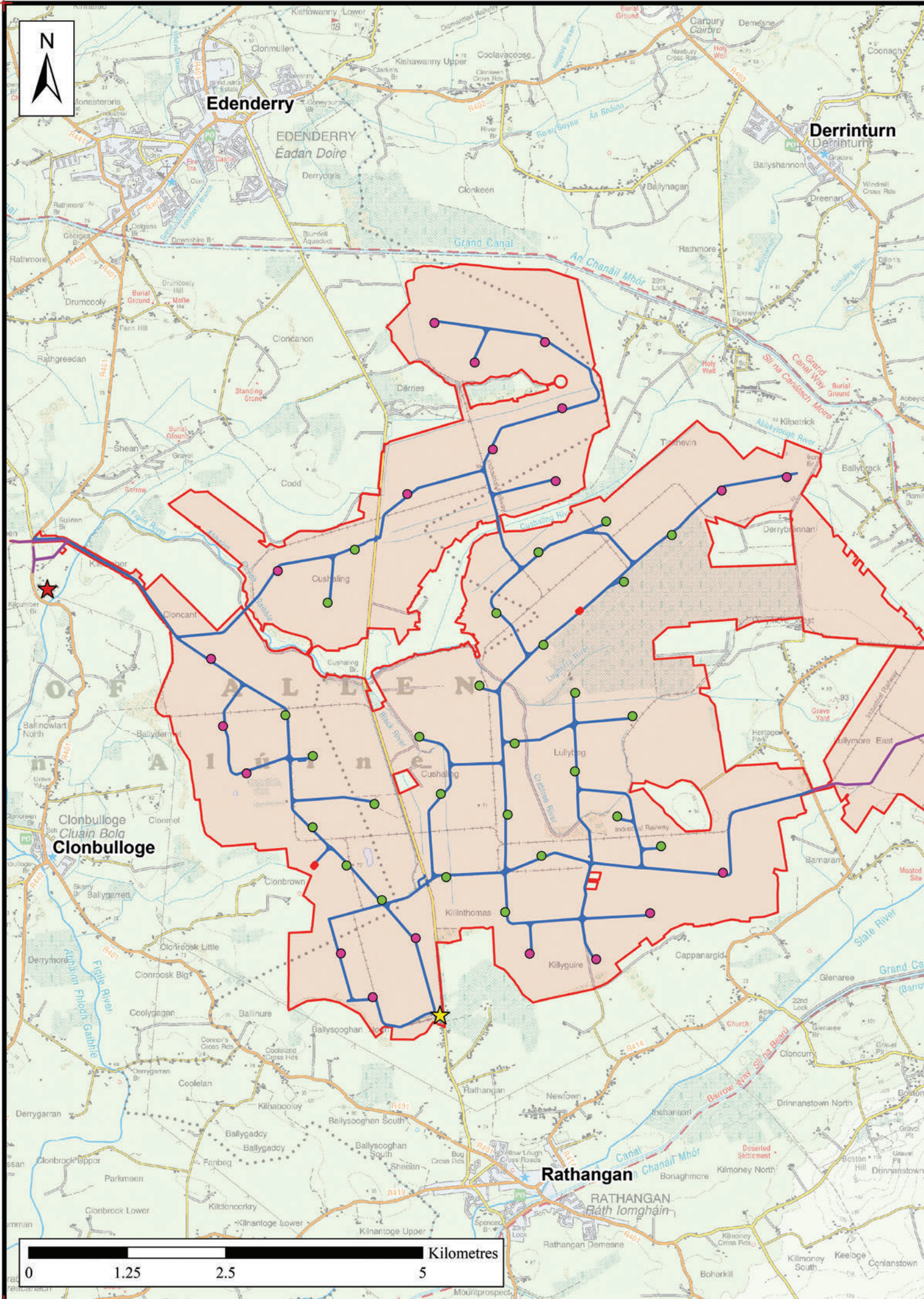
**Edenderry**

**Derrinturn**











**EDENDERRY**  
Éadan Doire

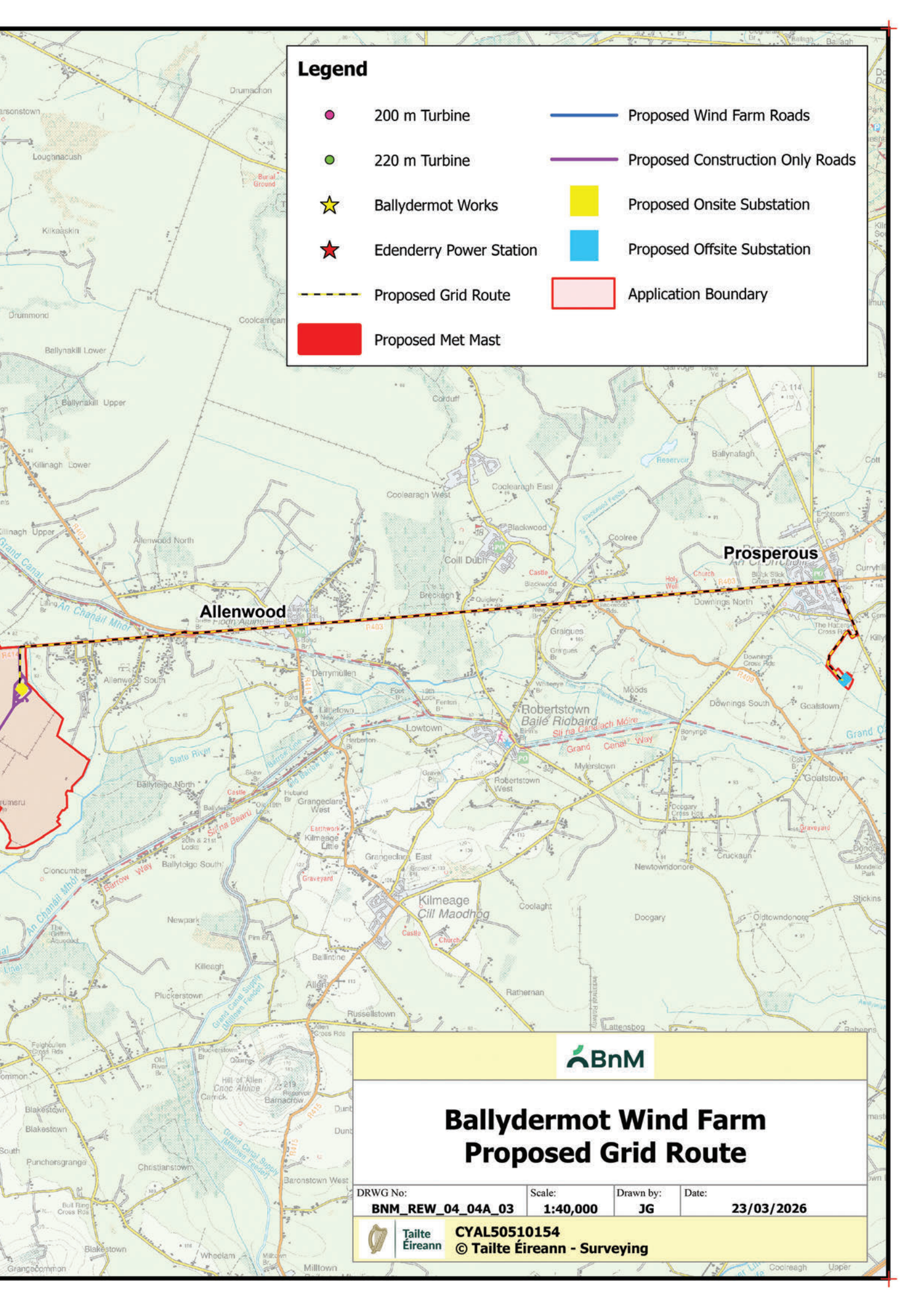
**Clonbulloge**  
Cluain Bola


**Rathangan**  
Ráth Iomhain



# Legend


-  200 m Turbine
-  220 m Turbine
-  Ballydermot Works
-  Edenderry Power Station
-  Proposed Grid Route
-  Proposed Met Mast
-  Proposed Wind Farm Roads
-  Proposed Construction Only Roads
-  Proposed Onsite Substation
-  Proposed Offsite Substation
-  Application Boundary





## Ballydermot Wind Farm Proposed Grid Route

DRWG No:	Scale:	Drawn by:	Date:
<b>BNM_REW_04_04A_03</b>	<b>1:40,000</b>	<b>JG</b>	<b>23/03/2026</b>


Taitte Éireann

CYAL50510154  
© Taitte Éireann - Surveying

# Need for Wind Energy

**Wind farms generate renewable electricity that contributes to the long-term decarbonisation of Ireland’s energy system and helps reduce greenhouse gas emissions across the wider economy, including agriculture and transport.**

The proposed project would contribute to Ireland’s and the European Union’s renewable energy and climate objectives over the medium to long term, supporting energy security and the transition towards greater energy self-sufficiency.

National policy, including the National Development Plan 2021–2030, sets ambitious targets to deliver up to 80% renewable electricity by 2030, while recognising that continued investment in renewable energy infrastructure beyond 2030 will be essential to meeting Ireland’s long-term climate commitments as the country progresses towards net zero by 2050.

In this context, the proposed Ballydermot Wind Farm represents an important element of Ireland’s long-term response to climate change. By supporting the continued growth of renewable electricity generation, the project would help underpin future climate commitments, enhance energy security, and reduce reliance on imported fossil fuels in the years ahead.

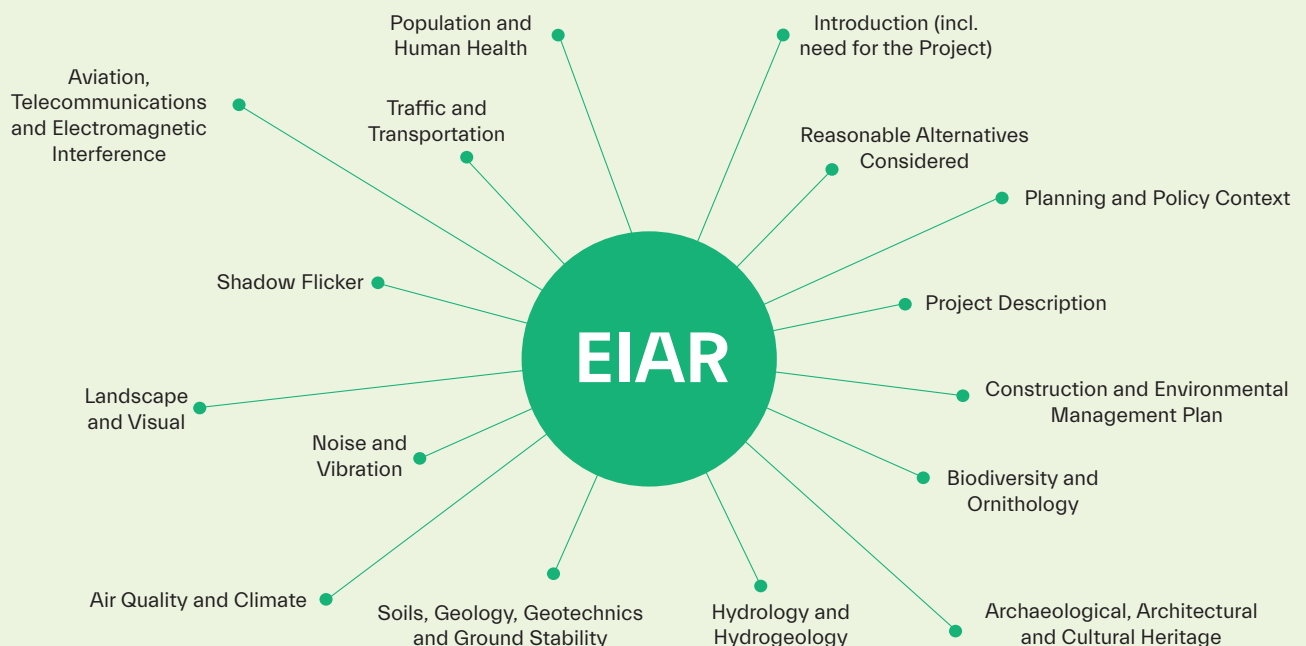
# Environmental Impact Assessment Report

Due to the nature and scale of the proposed development, a detailed environmental study, known as an Environmental Impact Assessment (EIA) is required. As part of this process, an environmental baseline for the site has been established through fieldwork and a programme of baseline surveys.

The findings of these assessments will be documented in an Environmental Impact Assessment Report (EIAR). The EIAR will include dedicated chapters on topics such as biodiversity and wildlife, noise, landscape and visual, shadow flicker, traffic and transport, air quality, climate, water and cultural heritage, aviation, population and human health.

The EIAR is a comprehensive public document that accompanies the planning application and is submitted to the appropriate consenting authority for independent assessment.

At a minimum, the EIAR for Ballydermot Wind Farm will comprise the following:



# Benefits of the Development

The proposed development will give rise to a range of benefits at different levels. At a local level, benefits arising from the construction and operation of the proposed wind farm will include:

- Employment;
- Upgrading of the road infrastructure in the vicinity of the wind farm (as required);
- Amenity and Recreational Facilities;
- The provision of a Community Benefit Fund;
- Payment of taxes from the project, and dividends from BnM to the State;
- Substantial rates paid to the relevant Local Authorities.

## Employment

Based on the current design, the proposed wind farm would support around 200–250 jobs at peak construction. There will also be indirect employment created through the sub-supply of a wide range of products and services including: gravel and graded stone for roads and hard stands, concrete and steel for turbine bases, building materials for sub stations, haulage of components from the ports to the site, accommodation, legal and financial services. Once complete the project will also support a number of long term, high quality technical jobs in operations and maintenance.

## Amenity and Recreational Facilities

The vision of the Amenity Plan (published in 2022) is to provide a new local and regional recreational resource that provides for co-location with the proposed Ballydermot Wind Farm and potential future uses of the site. The Draft Amenity Plan proposes various trail infrastructure, including over 60km of waymarked routes, amenities and facilities to maximise the visitor experience and enjoyment of the site. This includes car parking, toilets, sheltered resting spaces, seating, picnic areas, signage, a natural play area and sculptural features and interpretative signage. The Draft Amenity Plan will not impinge on areas of high



ecological or other environmental value within the site nor on any adjacent land use. The amenities will tie in with and complement the proposed wind farm infrastructure, and the peatland rehabilitation works. The amenity facilities will also link in with future connectivity in the surrounding settlements and sites / areas of interest. More details on this Amenity Plan can be viewed via the project website: [www.ballydermotwindfarm.ie](http://www.ballydermotwindfarm.ie).

## Community Benefit Fund

Similar to our existing wind farms, it is envisaged that an annual Community Benefit Fund will be set up for the proposed Ballydermot Wind Farm once the project is operational. As the project is at an early stage of its development, the exact nature and structure of a proposed Community Benefit Fund is not known at this time, albeit we would envisage it being similar in type to our existing Community Benefit Funds which include:

- **A Community Benefit Fund**  
Providing funding to local community and not-for-profit organisations
- **A Near Neighbour Fund**  
Providing an annual electricity contribution and once off support to carry out energy efficiency measures and/or education support to residents within a prescribed distance of a turbine.

# How you can get in touch

The Ballydermot Wind Farm will benefit from participation by all interested parties during each stage of the development. There are a few ways you can get in touch with us:

## Call us

If you wish to make a comment or require further information about the proposed wind farm please call the project's Community Liaison Team Niall (087 995 1174) or James (087 708 7022).

## Email us

Email us any comments or queries via:

**[ballydermotwindfarm@bnm.ie](mailto:ballydermotwindfarm@bnm.ie)**

## Write to us

Ballydermot Wind Farm Community Relations Team,  
BnM, Main Street, Newbridge, Co. Kildare, W12 XR59

## Join our mailing list

Keep informed of all project updates by signing up to our project mailing list. Please visit the project website to complete the sign-up form:

**[www.ballydermotwindfarm.ie](http://www.ballydermotwindfarm.ie)**

